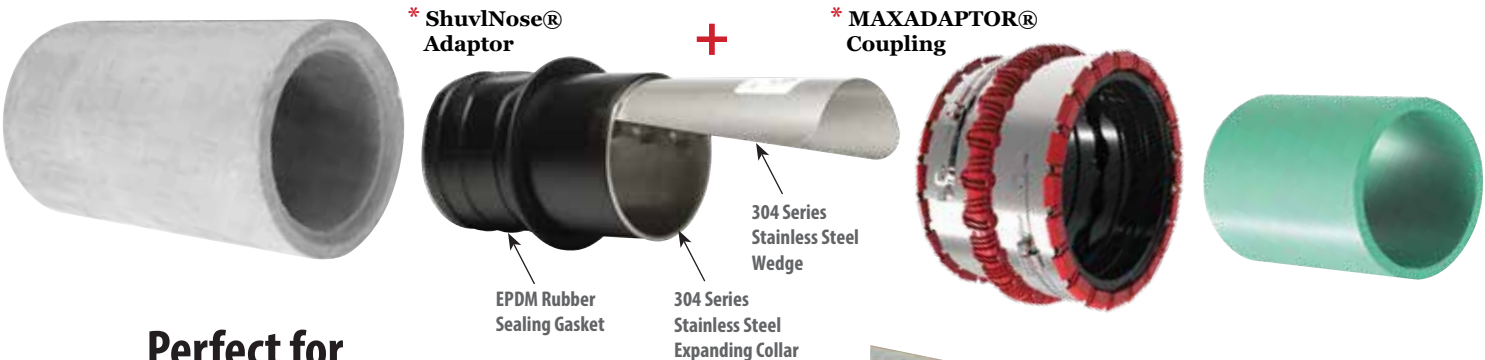




# ShuvlNose® Adaptor

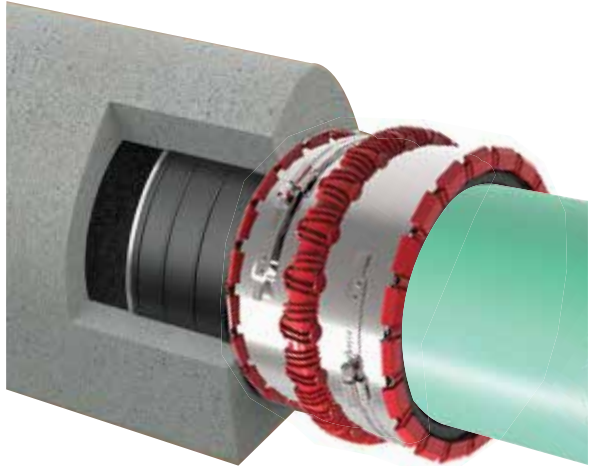
The *ShuvlNose® Adaptor* is used to establish a reliable connection between pipes with **similar inside diameters and widely different outside diameters**.



**Perfect for  
Concrete to Plastic  
connections!**

Transition is made by joining the **inside diameter of the concrete pipe** with the **outside diameter of the plastic pipe**.

After insertion into the concrete pipe, the EPDM gasket is expanded by inserting the wedge to the edges of the pipe, and several **sealing ribs ensure a tight connection**.



| DESCRIPTION | LARGER PIPE I.D. RANGE | SMALLER PIPE O.D. RANGE |
|-------------|------------------------|-------------------------|
| SNA 4       | 3.89" - 3.98"          | 4.00" - 5.56"           |
| SNA 6       | 5.67" - 6.10"          | 5.30" - 6.50"           |
| SNA 8       | 7.64" - 8.07"          | 7.20" - 8.80"           |
| SNA 10      | 9.61" - 10.04"         | 9.63" - 11.13"          |
| SNA 12      | 11.57" - 12.01"        | 10.50" - 12.68"         |
| SNA 15      | 14.72" - 15.12"        | 13.00" - 15.75"         |
| SNA 18      | 17.72" - 18.11"        | 16.34" - 19.10"         |

- *Easy repair of sewer/drainage pipes*
- *Suitable for all common pipe materials*
- *Increased efficiency equals labor cost savings*
- *Accommodates significant shear load and deflection*
- *For non-pressure, gravity flow sewer applications only*

\* ShuvlNose® Adaptor & MAXADAPTOR® Coupling sold together as a single unit.