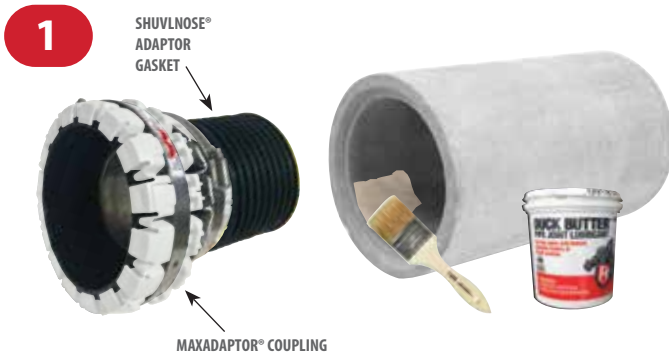




ShuvlNose® Adaptor

The *ShuvlNose® Adaptor* is used to establish a reliable connection between pipes with **similar inside diameters and widely different outside diameters**.

NOTE: Do not disassemble the coupling from the adaptor.



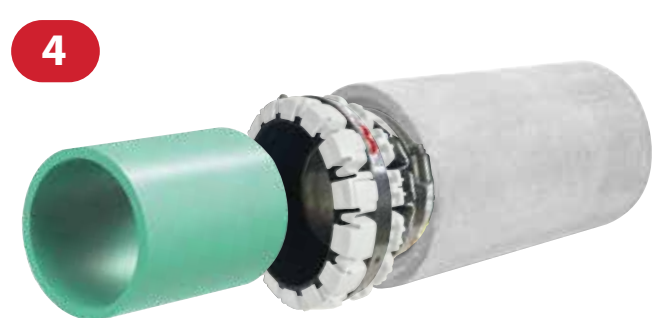
Apply lubricant to the inner surface contact area of the larger pipe.



Apply lubricant to the threaded gasket of the ShuvlNose® 4 Adaptor.



Insert the ShuvlNose® 4 Adaptor, and push the gasket fully into the larger pipe.



Insert the smaller pipe into the MAXADAPTOR® Coupling.



Take up all slack in coupling with a cordless drill or socket wrench. Complete the installation by tightening the tension clamps to 80 in/lbs. minimum torque.

Visit **MAXADAPTOR** - YouTube channel to see the ShuvlNose® 4 Adaptor installation video.

Gripper Gasket LLC
1660 Leeson Lane | Corona, CA 92879
(951) 479-4999 | (951) 479-4997 Fax
maxadaptor.com